



April 2015 News Update from the Friends of Pope Farm Conservancy

Pope Farm Tapestry 2015

Crop Rotation creates a different kaleidoscope of colors every year



The seven different prairie restoration projects change their look each year depending on the species, the maturity of the prairie, and the growing season. In addition, the rotation of 5 different crops within these constantly changing prairies gives Pope Farm Conservancy a different look and feel every year. When you combine this with changing site lines during the growing season, you have an ever changing kaleidoscope of colors spring, summer, and fall.

This year will look familiar, yet different. The **sunflower** field returns to the top of the hill and will yield that yellow rolling view over the stone fence that seems to go on forever. What will be different this year is that the **corn** will next to the sunflower field. As you walk the trail between the sunflowers and the corn, it should create an impression of a tall green wall on one side of the trail, and a beautiful

yellow carpet on the other. Moving north down the hill from the picnic area, you will be able to view a beautiful field of winter wheat framed by the pine trees of the adjacent woods.



Photo by Janie Starzewski

As you walk along the field of **timothy** grass toward the CCC spillway, you can enjoy the view of the Black Earth Creek valley, and touch the beautiful short grass prairie along the other side of the trail.



Photo by Dennis Schenborn

The west end of the conservancy will feature the **soybean** field in the North, and the **oats** will occupy the South. This is the crop rotation, and like very light twist of the kaleidoscope, the colors and textures of the land will change and form this beautiful tapestry at Pope Farm Conservancy in 2015.

Thank you, Dane County Environmental Council!

This month, we are pleased to announce that the FOPFC will receive a grant from the Dane County Environmental Council for \$527. These funds will go toward parsnip predators (a type of shovel) for volunteers to use to control invasive species. Thanks to Dennis Schenborn and Curt Caslavka for working on this successful grant application.

Archaeology Tour

Wednesday, May 13th, 6:30 – 8:00 pm



Dr. Rosebrough, State Historical Society, will take us on an archaeological tour of sites in Pope Farm Conservancy and discuss Native American life in and near Pope Farm. She will show us how Native Americans made tools out of stones and provide a fascinating overview of how land usage has changed. [This event is free and open to the public](#) - no registration necessary. Hope to see you there!

Pope Farm Conservancy 2015 Events

We have an exciting line-up of events this year! We hope you can join us for these interesting, informative and beautiful tours. More information can be found on our website:

<http://popefarmconservancy.org/events>

MAY

- [Pope Farm Conservancy Archaeology Tour](#) - May 13th 6:30-8:00 pm (Wed)

JUNE

- [The Glacier at Pope Farm Conservancy Tour](#)- June 11th 6:30-8:00pm (Thurs)
- [Prairie and Savannah Birding Tour](#) - June 20th 7:00-8:30am (Sat)
- [Spring Membership Picnic](#) - June 20th 1:00-3:00pm (Sat)

JULY

- [Prairie and Savannah Walking Tour](#) - July 8th 6:30-8:00pm (Wed)
- [Native American Garden Tour](#) - July 22nd 6:30-8:00pm (Wed)

AUGUST

- [SUNFLOWER DAYS](#) - August 1st-August 9th (Saturday through following Sunday)
Sunrise to Sunset – Actual dates may vary depending on peak sunflower bloom
- [The Annual Pope Farm Conservancy Tour](#) - August 12th 6:30-8:00pm (Wed)
- [Bees and Pollinators Tour](#) - August 16th 9:00-Noon (Sun)

SEPTEMBER

- [Pope Farm Conservancy Heritage Day](#) - September 13th 12:00-4:00pm (Sun)
- ["On the Move" – The Migratory Birding Tour](#)- September 27th 7:30-9:00am (Sun)

OCTOBER

- [Fall Membership Picnic](#) - October 4th 1:00-3:00pm (Sun)
- ["They Came to America" – German Immigration Tour](#) - October 15th 5:00-6:00pm (Thurs)

Volunteers Needed

Middleton Cross Plains Area School District (MCPASD) Field Trip, May 27-29

The MCPASD will sponsor the spring 4th grade field trips to Pope Farm Conservancy on May 27, 28 & 29, 2015. The Naturalists that work for the school district along with the WI State Historical Society Staff request volunteer support in their efforts to work with these students. This is an opportunity to participate in a school field trip to PFC, work with local school groups, and learn more about our local geology and archaeology. They also would like an individual who can take some quality photographs of the various teaching stations during the field trip. The naturalist will train volunteers, and will also advise the photographer on what type of photos are needed. Please understand that this is not a FOPFC sponsored event but at the same time, the field trip staff would appreciate any volunteer assistance which the Friends can provide. If you can help for a morning or afternoon during these field trip dates, they would greatly appreciate it. Please contact the Lead Naturalist, Stephanie Williams at sbwilli@charter.net for more information.

Prairie Restoration Burn at PFC



Pictured Above: Hillside Oak Savannah Burn (center part of the Conservancy) - *Photo by Mike Healy*

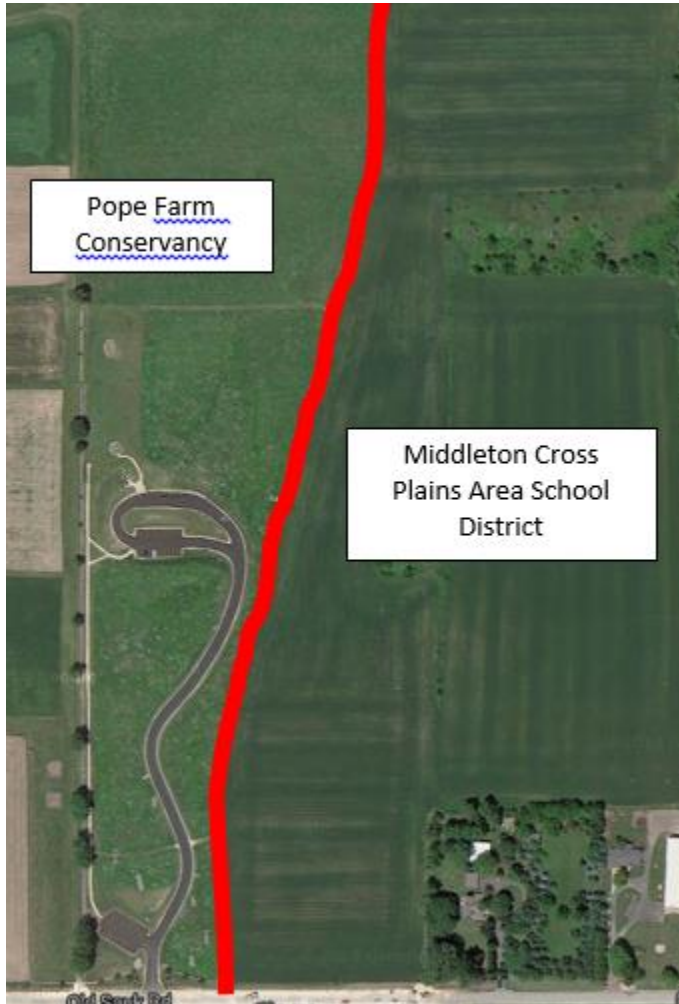
During the first week in April, four different prairies at PFC were burned. The next day it snowed, so we took advantage of the spring-like weather. The Blackhawk Prairie and the Ravine were then burned on April 17th once the prairies had a chance to dry out a bit.



Above: The Ravine Prairie Burn - *Photo by Janie Starzewski*

Question of the Month

When will the School Property adjacent to PFC be developed?



The MCPASD land (outlined above) is slated to be a school someday. The 40-acre parcel was originally part of Pope Farm, and was sold to the Middleton Cross Plains School district by the Town of Middleton. At this time, there are no immediate plans to build the school; however, greater demands from the ever growing Elderberry neighborhood (and others) will require an additional school on the site. Obviously, when the demand is there, a referendum will be required before any building could take place. The concept of a school fits with the educational nature of Pope Farm Conservancy.

If you have a question for us, please send it to info@popefarmconservancy.org and we will try to answer it.

Friend of the Month

Susan Hunt

Thank you, Susan! Susan Hunt was a friend of Pope Farm Conservancy before FOPFC existed. Susan worked as a graphic artist for the Wisconsin Geological and Natural History Survey. It was there that she worked on the interpretive geology signs that you see at the Conservancy today. Susan is retired now, and last year she designed the Heritage Day flyers and the sunflower information pamphlets that we used as promotional pieces. This year, Susan is working on a brochure about PFC and is doing a trail map that can be utilized by the public. Susan has a remarkable artistic ability, and Susan, we truly appreciate what you have done for the Friends of Pope Farm Conservancy!



And a happy field of Sunflowers to you, Susan!

Photo of the Month

The sun peaking its head over the stone wall - By Mike Morris



We welcome you to share your photos of Pope Farm Conservancy for our next "Photo of the Month." You can upload your photo(s) to our Flickr page at <https://www.flickr.com/groups/fopfc-photos/> or send them to photos@popefarmconservancy.org.

Connect with Friends of Pope Farm Conservancy on Facebook

Are you on Facebook? It's a great way to share your pictures and stories with others who "like" Pope Farm Conservancy.

<https://www.facebook.com/FriendsOfPopeFarmConservancy>



**Thank you for joining the
Friends of Pope Farm Conservancy!**

Our Journey Begins and You are part of it!