



November 2016 News Update

If you haven't visited Pope Farm Conservancy since the sunflowers were in bloom, things are looking quite a bit different now. Many of the crops have been harvested. In the prairies, the native grasses have turned to beautiful shades of gold, orange, and bronze. And the sunflowers (pictured below), or rather what's left of them, will be gone within the next week.



We hope you'll take advantage of this amazing weather to come out and enjoy the beauty and tranquility of Pope Farm Conservancy in fall.

What's New at PFC?

We are now entering the slow part of the year. Prairie seed collection has ended, the public tours are complete, and the educational field trips are done until spring. The FOPFC Board is currently putting together the 2017 budget, and the planning begins for another great year at Pope Farm Conservancy. There are many great things happening at Pope Farm. We welcome you to get involved, and we thank you for your continued support!

Prairie Team Report

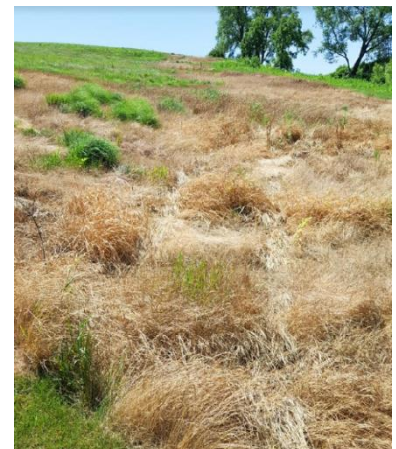
Blackhawk Prairie Update

Seed collection for 2016 has been completed. The Prairie Team Volunteers focused on collecting prairie seed from the short grasses growing in the Blackhawk Prairie (pictured right).



This seed will be stored overwinter and used later to restore and improve other parts of the Blackhawk Prairie that have been overtaken by weeds. The weedy

areas (pictured below left) will be replanted in 2017. During this past growing season, a good deal of effort has gone into eliminating those weeds growing in the problem areas. The weedy vegetation was killed in preparation for reseeding in 2017 (pictured below right). Our present plan is to hand broadcast the native shortgrass seeds into these areas next Spring.



Another goal in our seed collection efforts was collecting seeds for the Oak Savanna Prairie at PFC. Several species were collected from PFC as well as other areas in Dane County. Prairie species such as Spiderwort, Nodding Onion, and Rough Blazing Star are examples we collected and used to overseed the Oak Savanna.

This year, there was a tremendous influx of migrating monarch butterflies, nectar feeding mostly on Showy Golden Rod, and various Asters at this location.

In addition to these efforts, the FOPFC has also harvested prairie seed to give to the Town of Middleton to use in other conservancy areas within the township. Overall, 45 people collected over 20 different species of prairie seeds at Pope Farm Conservancy in 2016. Wow!

A huge thanks to all of you! Your efforts will certainly be noticed in the future.

FOPFC Helps Wisconsin Historical Society

The Wisconsin Historical Society has helped conduct field trips at PFC for the last 10 years. This year, because of personnel reductions, the Historical Society asked the Friends to assist them with the field trips.



Some of the members of the Education Team volunteered to help the Historical Society conduct these field trips in October 2016. The Committee plans to continue these volunteer efforts, and their help was greatly appreciated by all. If you would like to learn more, please join us at the next Education Team meeting on Tuesday, Nov. 29th. (See the Upcoming Meeting section below.)

Interactive Tour Project Begins at PFC

The FOPFC Education Team has begun to work on an interactive tour of Pope Farm Conservancy. The goal is to develop an online tour that can be accessed using a smart phone. As visitors walk the Conservancy, they can scan a special barcode, called a QR code, at various locations throughout their tour. The QR code will direct people to FOPFC's website where they can learn more about that particular feature. The goal is to provide a variety of content (text, images, videos, and more!) to tell the stories of the land. This is a 3- or 4-year project that will require research on these topics.

The FOPFC Education Team, along with Clark Street School, are currently starting with the story of the German cabin site at Pope Farm Conservancy. Research is being conducted to learn about the Goth family at the cabin site location, and how people lived during the mid to late 1800's at a rural site like this. The photo shown below is the cabin of Carl Goth that was located on Old Sauk Rd. Carl's brother Jaochim, lived in a similar cabin at the German cabin site at Pope Farm Conservancy.



Carl and Sophia Goth, posing in front of the log cabin that in earlier years was their first home in the Town of Middleton (photo ca. 1890)

If you like history and would like to help with this project, please join the Education Team at the next meeting on Tuesday, November 29th, 2016 (6:30 – 8:30 pm) at the Town Hall on Old Sauk Road. It is an enjoyable experience AND a great learning opportunity!

Upcoming Meetings

You are encouraged to attend the following meetings to just observe, offer your viewpoints, or join these committees if you are interested.

Events Team Meeting

When: Tuesday, November 15th, 2016 (6:30 – 8:30 pm)

Where: Town of Middleton hall, 7555 W. Old Sauk Rd, Verona, WI (across from the conservancy)

The 2016 events are coming to a close, and the team will be looking at FOPFC events for 2017. What tours will we offer? What events will we pursue? This is a great opportunity to offer your thoughts, and to see how the team works. Consider joining this great group of people who have fun giving back to the community.

Education Team Meeting

When: Tuesday November 29th, 2016 (6:30 – 8:30 pm)

Where: Town of Middleton hall, 7555 W. Old Sauk Rd, Verona, WI (across from the conservancy)

We will attempt to finalize the German Immigration story so that we can begin building the visuals necessary to use for the interactive tour. We will attempt to begin work on the conservation and preservation story of Pope Farm Conservancy. These are great meetings! If you are interested in history and would like to help educate the public, please stop by.

Volunteers Needed

Administrative Support - We still need your help!

As the Friends group has grown, so has the work load for the administration of the FOPFC. We need one or two volunteers to help the Board with membership and marketing communications, records, financial information, and the overall administration of the organization. If you can spare a couple hours a week or even a few hours a month, your help would be greatly appreciated. Please contact Mel Pope at mel@popefarmconservancy.org to learn more about this volunteer opportunity.

Volunteer Coordinators

We are looking for two or three volunteers to help us recruit and coordinate volunteers for Sunflower Days 2017. Sunflower Days is enjoyed by thousands every year, and a strong volunteer effort is essential to the success of this event. The time commitment for this volunteer coordinator position is approximately 5-10 hour/week in the weeks leading up to Sunflower Days (mid-late July 2017). As you may recall, there are over 100 volunteers shifts to fill, so we need help calling members and past volunteers to start filling shifts. If you are interested in talking about this position, please contact Mel Pope at mel@popefarmconservancy.org.

Newsletter and Social Media Contributor

What do you enjoy most about Pope Farm Conservancy? Want to share your experience or memories of PFC with fellow Friends? If you would like to contribute an article or photo for our monthly news update, biannual newsletter or Facebook Page, please email us at info@popefarmconservancy.org.

Questions of the Month

Is the Conservancy open during the winter months?

Yes, the Conservancy is OPEN year round. In the winter, visitors can enjoy outdoor activities such as snowshoeing, sledding, and cross country skiing (trails are groomed). To use the Conservancy during the winter months, you may park in the lower parking lot off Old Sauk Road. This lot will be plowed by the Town of Middleton. If there is no snow, you can also park in the lot off Blackhawk Road.



Why is the gate to the upper parking area closed during the winter months?

The upper parking lot off Old Sauk Road is closed for several reasons. First, the Town does not plow the road to the upper parking area during the winter months. Second, there is no one available to close the gate during the off-season. The gate is typically closed at night when the Conservancy is closed to help prevent vandalism.

Why are the interpretive signs taken down during the winter months?

The interpretive signs are taken down during the winter months to extend the life of the signs. Sunlight damages these signs over time, so taking them inside for the winter will prolong their use.

If you have a question for us, please send it to info@popefarmconservancy.org and we will try to answer it

Friend of the Month

Thank you, Dave Manion!

Dave Manion was an incredible help during Sunflower Days. He volunteered for several shifts during the 9-day event...sometimes multiple shifts a day! He often started early in the morning by helping to resupply the water bottles to the water station. He would then help supervise the parking areas, as the crowds poured in. He was one of the key “go to” people who was always there when we needed him. In addition, Dave was a member of the Sunflower Logistics team that planned and executed the Sunflower Days event. Dave Manion truly made a difference by his volunteer efforts, and we cannot thank him enough!!



And a happy field of sunflowers to you, Dave!

Photo of the Month

"Many will say the 'peak pretty' season is long over for sunflowers, but I find them beautiful and intriguing to photography anytime of the year." - **Steven Bauer**



Fall Membership Drive

Renew Your Membership Today!

Just a reminder...you can now renew your membership securely online using a debit or credit card. Click on the button to the right or go to <https://www.popefarmconservancy.org/membership/> to renew your membership today! If you have already renewed your membership, THANK YOU! As a member of FOPFC, you will continue to receive monthly updates on the Conservancy, bi-annual newsletters, notification of education tours and special events, and invitations to help us in our volunteer efforts. Memberships are good for one (1) calendar year from the last date of your previous membership. We hope you enjoy being a part of our community.

Connect with FOPFC on Facebook

Are you on Facebook? It's a great way to share your pictures and stories with others who "like" Pope Farm Conservancy.

<https://www.facebook.com/FriendsOfPopeFarmConservancy>



**Thank you for supporting the
Friends of Pope Farm Conservancy!**

