



June 2020 News Update

Update 2020 Events Calendar

The dedicated Pope Farm Events Team has been hard at work planning a full and diverse roster of events for 2020. Unfortunately, the COVID 19 pandemic has interrupted the schedule so far this year. **Both the May and June events have been cancelled.** We'll be following the state and county guidelines carefully regarding social distancing, mask wearing and group size thresholds. We'll hold, postpone, go virtual if feasible, and/or cancel the rest of the calendar as warranted. We'll keep you posted through emails and update our website regarding cancellations and changes in the programming.

For now, future events on the calendar are as follows:

- **Prairie Plants in the Conservancy**
Saturday, August 22, 10am
- **Monarch Butterfly Habitat and Migration**
Monday, September 14, Time TBD
Pope Farm Elementary School or online via ZOOM
- **Plein Air Painting and Photography in the Conservancy**
Saturday, September 19, Time TBD
- **Forest Bathing in the Conservancy**
Sunday, September 20, 10am
- **Migrating Birds Walk in the Conservancy**
Saturday, September 26, 7:30am
- **Native American Spirituality and Care for the Earth**
Sunday, September 27, 1:00pm
- **Fungi and Mushroom Logs**
Sunday, October 4, 10:30am
Pope Farm Elementary School

Be sure to check out the Events Page on our website for the latest event info. For questions/concerns, please email us at info@popefarmconservancy.org.

Upcoming FOPFC Meetings

Our Education and Events Teams are now hosting their monthly meetings online via Zoom. We welcome you to participate in these meetings from the comfort of your home.

Education Team Meeting - ONLINE

When: Tuesday, June 16th, 2020 at 6:00 pm

Where: Online via Zoom - Email Doug Piper (dlpiper0413@gmail.com) to get the meeting link.

Discussion topics: “History of the Land” research project, fall field trips, lesson plan ideas for the Middleton Cross Plains Area School District, and more!

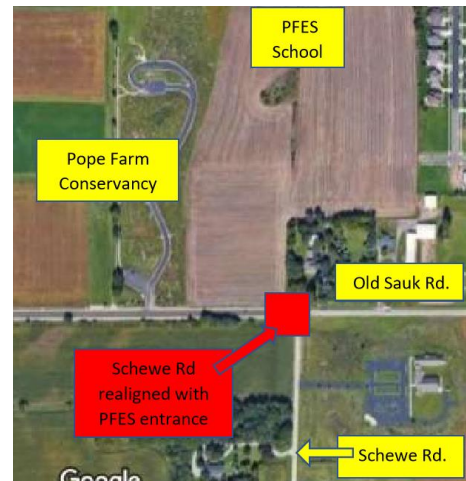
Next Education Team Meeting – TBD

What’s New at PFC?

Old Sauk Road Now Open

Old Sauk Road is reopened after the realignment of Schewe Road was completed. The new alignment allows for Schewe Road to cross Old Sauk Road directly into the school entrance.

Pictured below: Looking to the north, Schewe Road is now aligned with the school entrance.



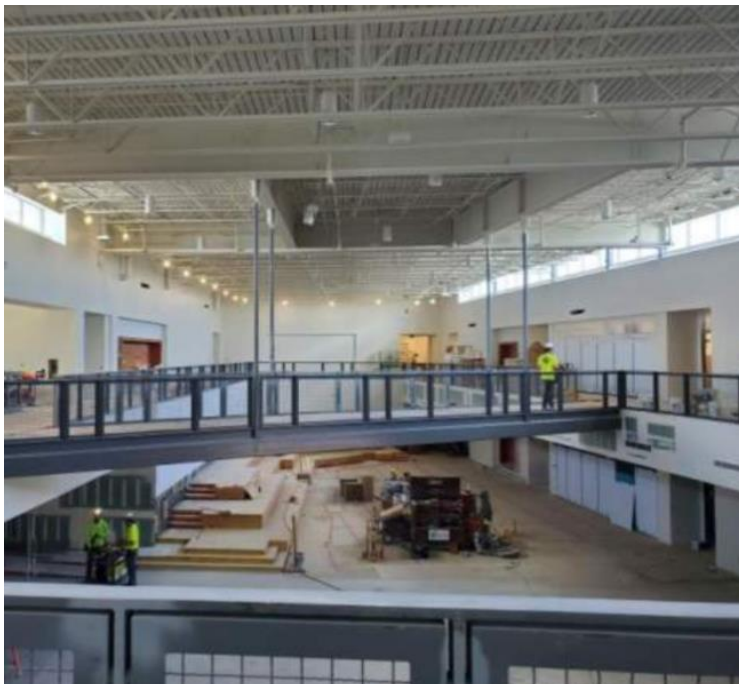
Pope Farm Elementary Update – Completion by July 1st

Pope Farm Elementary School construction is on track to be completed by July 1st. No decision has been made about when or how the school will open. When at full capacity, the school will accommodate 525 students.

Photos and Photo comments courtesy of J.H. Findorff and Son Inc.



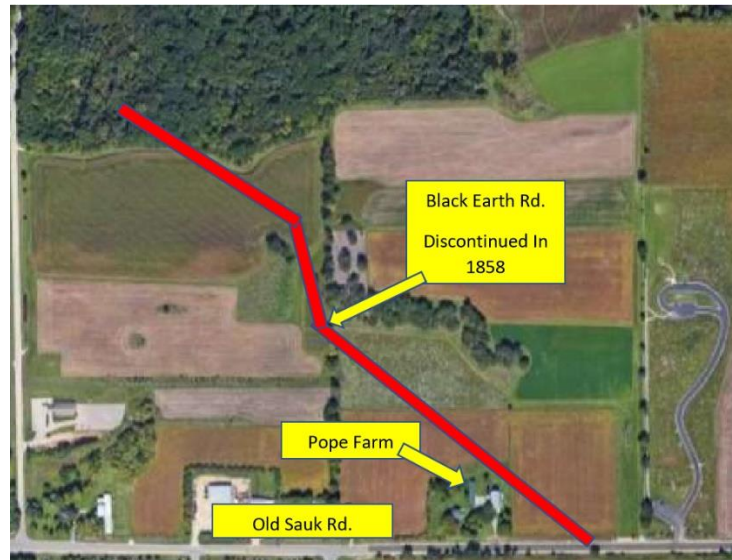
Above: Exterior metal panel progress on the southeast side. The south side is completely finished with green panels, while the east side nears completion.



Above: Painting completed on the walls of the second-floor atrium walkway

A Road Thru Pope Farm Conservancy? It happened!

Once upon a time there was a road that ran through the Pope Farm property. This was before Pope Farm and the lands around it were platted in 1848. It was known as the Black Earth Road. This road was part of a long-distance wagon road which ran from Middleton Junction to Spring Green by 1843 and to Richland Center by 1848. The aerial photograph of Pope Farm below shows the route of the Black Earth Road through the central and western portions of the Pope Farm.



Section of Black Earth Creek Rd. thru Central PFC farm. Discontinued in 1858

During this time period, the two main roads on the west side of Madison were Mineral Point Road which ran southwest toward the mining communities of southwest Wisconsin as well as the road we know today as Highway 12 which ran northwest toward Sauk City. If you wanted to travel west from Madison to places like Black Earth or Spring Green, you would use the “Black Earth Road”. There was no road going directly west from Madison (like US Highway 14 today), because of the huge marsh created by Mud Lake and surrounding areas. To go west from Madison, you’d go to Middleton Junction (today it’s the Beltline and Mineral Point Road), then northwest and ultimately cross what’s now the Pope Farm Conservancy.

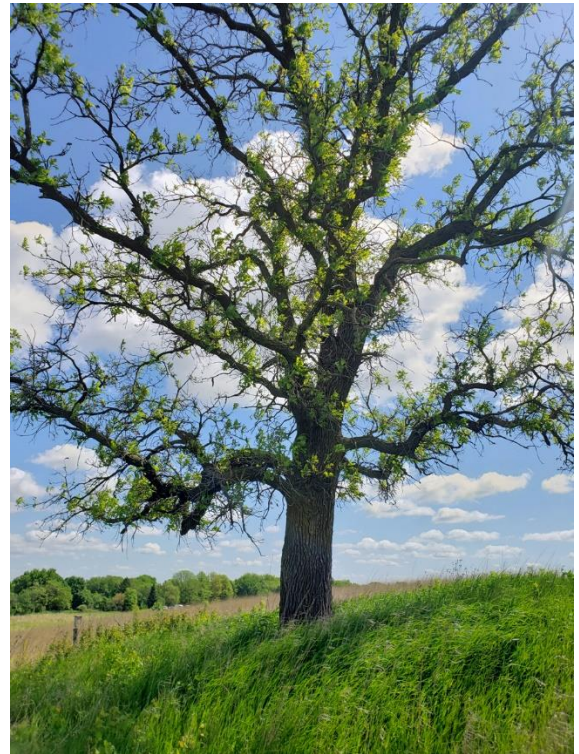
Between Middleton Junction and the Black Earth Creek, the Dane County 1855 road map shows that this road followed a northwesterly diagonal route that did not follow any property lines. The section of this road that still remains is the graveled road that crosses Pleasant View Road just to the north of the traffic circle at the University Research farm. Also, to the northwest of Pope Farm, the road went through where the yellow gate is on the west side of the Twin Valley Road and then ran northwest to the Black Earth Creek crossing near the ridge where it reached the current US Highway 14 alignment.

Approaching Pope Farm, the Black Earth Creek road crossed the land across from the farm at a diagonal and entered the Pope Farm to the west of the stone wall. It then went uphill behind the barn to its highest elevation on its route and then went downhill and through the watershed divide where the Goth farm house stood. Then it again headed to the northwest toward what became the Twin Valley Road. Once the current Old Sauk Road and Twin Valley Road next to the Pope Farm were built in 1858, the diagonal route through the Pope Farm was abandoned and the right of way ownership reverted from the town of Middleton to the two farms impacted. After 1858, this through route from Madison through Middleton Junction and on to Spring Green now passed in front of the Pope Farm property on Old Sauk Road and then went over the ridge on the Twin Valley Road. By 1890 a new route around Mud Lake was built so that the major route between Madison and Spring Green shifted away from the Pope Farm.

Elsewhere along this route, it was known as the Madison Road and before the 1890's, it was the major travel route between Madison and Richland Center. Portions of it are now US Highway 14.

Photos of the Month

Late spring is a beautiful time of year to visit the conservancy. The early blooming wildflowers bring lots of color to the prairies. Look for shooting stars in the North and South Prairies, and wild lupine and columbines in the Oak Savanna.





Connect with FOPFC Online

Website: <https://www.popefarmconservancy.org>

Facebook: <https://www.facebook.com/FriendsOfPopeFarmConservancy>

Flickr: <https://www.flickr.com/groups/fopfc-photos>

Renew Your Membership: <http://www.popefarmconservancy.org/membership>

**Thank you for supporting the Friends of Pope Farm Conservancy!
Our journey is ongoing, and YOU are part of it!**

